

COMMUNIQUÉ

CENSUS 2006 POPULATION AGE

As of July 17, 2007 Statistics Canada has released their 2006 Census data regarding age and sex (for Census data staggered release dates see: <http://www12.statcan.ca/english/census06/release/index.cfm>). The Social Planning Council of Cambridge and North Dumfries is mandated to collect, analyze and share data on current and projected demographics and thus are providing a synopsis of the released data specific to Cambridge and North Dumfries for awareness and use within the community. This data, along with other new Census data, will also be included in the SPC-CND's 2008 *Community Trends Report*.

Population Growth

In 2006, the population of Cambridge was 120,371 and the population of North Dumfries was 9,065¹. Between 2001 and 2006, Ontario was the only province other than Alberta who experienced population growth faster than the national average². As a designated urban growth centre under the Province of Ontario's Proposed Growth Plan, Cambridge's population is expected to reach 174,175 by 2031 (Region of Waterloo, personal communication, August 10, 2007). In 2031, North Dumfries' projected population is 14,745 (Region of Waterloo, personal communication, August 10, 2007).



An Aging Population

Overall, Statistics Canada reports an aging population and contributes this to increases in life expectancy combined with a low birth rate. Life expectancy still stands at 82.5 years for women and 77.7 years for men and the fertility rate of 1.6 children per woman is below the replacement level³. Nationally, one in seven Canadians are 65 years or older, representing a record 13.7% of the total population. Of those 65 and over, 26.9% are aged 80 and over, a 2.9% increase from 2001⁴. In 2006, Canadians over the age of 80 reached the one million mark for the first time in history. Conversely, in Canada the population of those aged 15 and under has declined (-2.5%) in 2006 from 2001⁵.



Why do the population characteristics of our communities matter?

It is important that community groups, nonprofits and government bodies plan their programs to meet the growing and shifting nature of our local population.

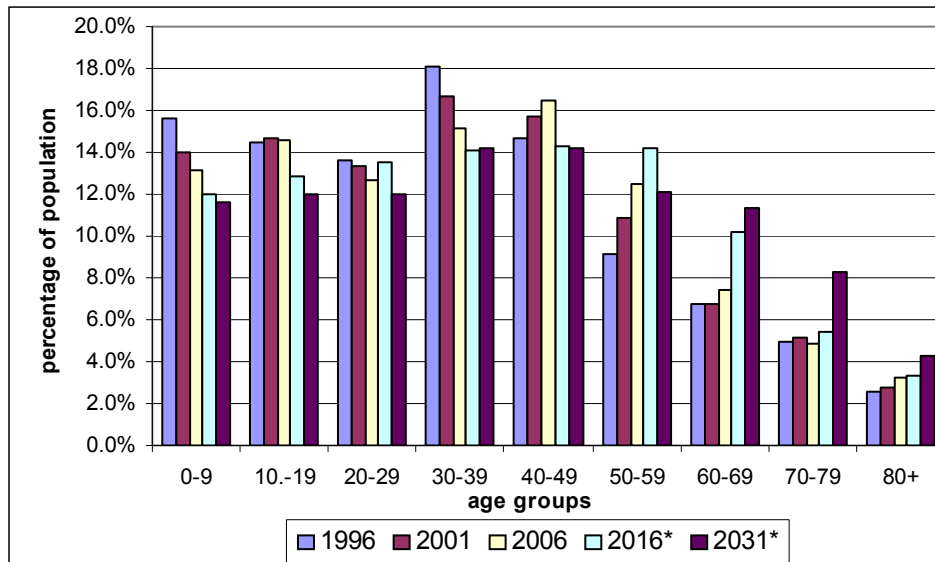
Given the scarce resources (financial, volunteer) available to provide services, it is critical that efforts are directed to areas of greatest need. Remaining relevant and connected to the changing profile of our community contributes to an organization's long term sustainability.

An Aging Population (Continued)



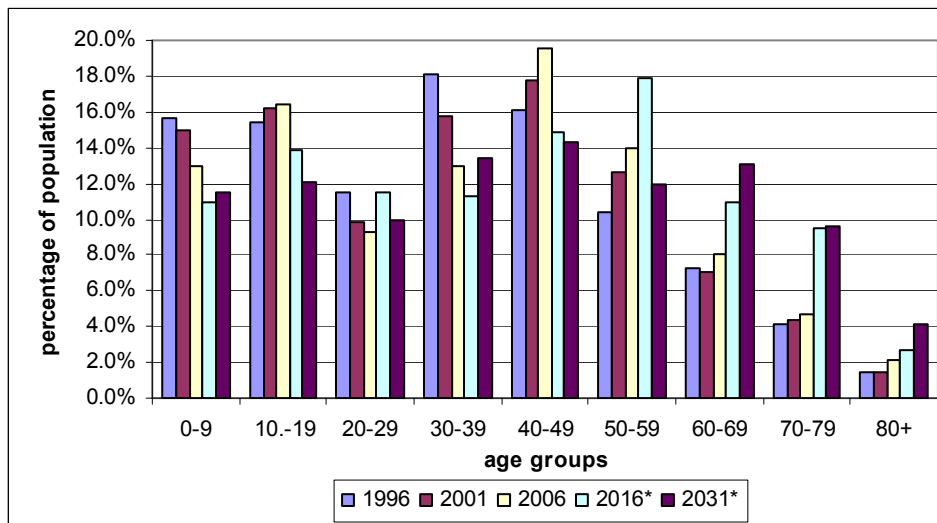
Ontario is one of the younger provinces with a median population age of 39 years; Cambridge's median age is 36.4 years and North Dumfries' median is 39 years⁶. Please see the graphs below for further breakdown of the population by age.

Cambridge Population By Age Group⁷



*note: 2007 preliminary population projections based on 2006 Census data (projections provided by the Region of Waterloo, August 2007)

North Dumfries Population By Age Group⁸



*note: 2007 preliminary population projections based on 2006 Census data (projections provided by the Region of Waterloo, August 2007)

As evidenced in these graphs, the population in Cambridge and North Dumfries is projected to continue to increase and age significantly with a large proportion of the population over the age of 60.

References

- ¹Statistics Canada. 2007. Community highlights for Cambridge. 2006 Community Profiles. 2006 Census. Ottawa. July 17. <http://www12.statcan.ca>
- ²Statistics Canada. 2007. Portrait of the Canadian Population in 2006 by Age and Sex: Findings. Ottawa. July 17. Analysis Series, 2006 Census. <http://www12.statcan.ca>
- ³Ibid.
- ⁴Ibid.
- ⁵Ibid.
- ⁶Statistics Canada. 2007. Community highlights for Cambridge.
- ⁷Ibid.
- ⁸Ibid.



150 Main Street
2nd floor
Cambridge
Ontario
N1R 6P9

Phone: (519) 623-1713
Fax: (519) 621-6220

"We actively and impartially participate in building and strengthening our communities through social change, innovation, research, analysis and facilitation."

**WWW.SOCIALPLANNING
COUNCIL-CND.ORG**

Prepared by
Stephanie Ellens-Clark