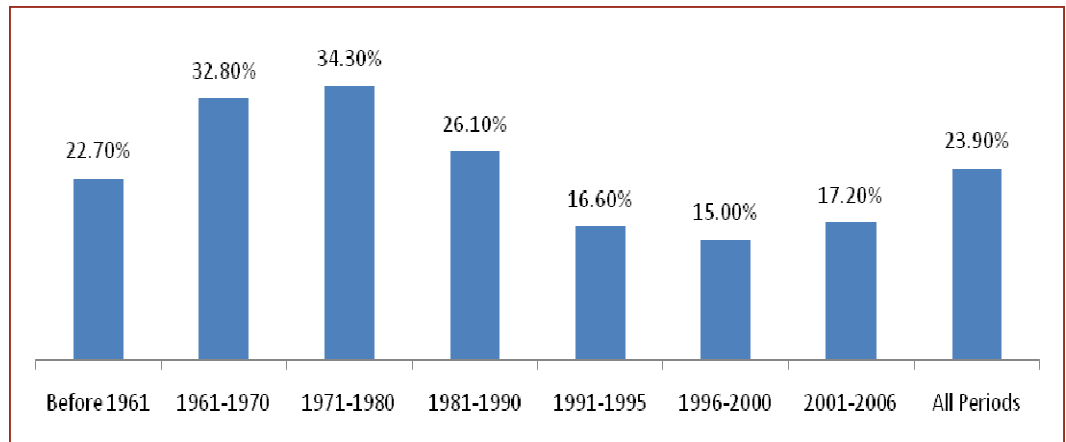




The SPCCND actively and impartially strives to improve the quality of life for all residents of Cambridge and North Dumfries through community based research, planning and action. We wish to thank the following funders for their support of this publication.



## Immigrants living in Cambridge as a percent of those living in Waterloo Region by period of immigration



Source: Statistics Canada, 2006 Census

In 2006, 1.7% of Canada's 6.2 million immigrants were living in the Region of Waterloo. Of these, nearly a quarter (25,225) were living in the city of Cambridge.

As shown in the chart above, Cambridge's share of the Region's immigrant population has varied according to the period of immigration. The majority of immigrants living in Cambridge (72.8%) arrived prior to 1991.

Over the past number of years the immigrant population has been increasing at a faster rate than the total population. Between 1991 and 2006 the number of immigrants living in

Cambridge increased by 6,860 people, or 37.4%. In comparison, the total population of the city grew by only 29.7% during the same period.

In this paper the term "recent immigrant" refers to immigrants who achieved permanent resident status between 2001 and 2006. In 2006 there were 2,935 recent immigrants living in Cambridge. Recent immigrants accounted for 12% of all immigrants living in Cambridge and 2% of the population of the city as a whole.

### Inside this issue:

Countries of Origin	2
Age and Gender	2
Marital Status and Family Structure	2
Language Ability	3
Educational Attainment	3
Labour Force Activity	3
Settlement Patterns	4
Income Levels	4

## Immigration Categories

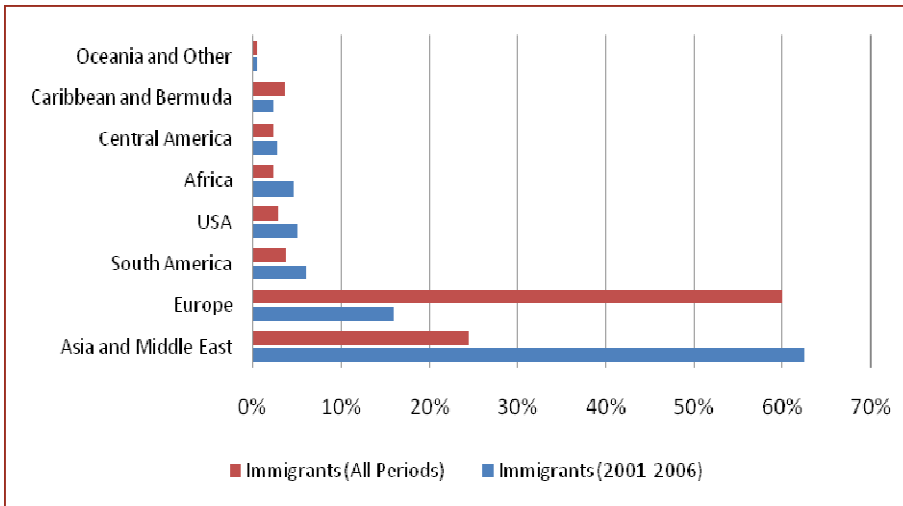
People entering Canada have different reasons for doing so. Of the 456 immigrant arrivals who settled in Cambridge in 2008, more than one-third (38.4%) were classified as economic immigrants, 43.0% were admitted in the family reunification category, and 10.7% were refugees.

In comparison with 1996, the number of immigrant arrivals in all categories has increased. Of the three categories, the family category experienced the greatest proportional change, shrinking by 22.2% while the economic category grew by 14.2% and the refugee category grew by 5.5%.

	1996#	1996%	2008#	2008%
<b>Economic</b>	33	24.4	175	38.4
<b>Family</b>	88	65.2	196	43.0
<b>Refugee</b>	7	5.2	49	10.7
<b>Other</b>	7	5.2	36	7.9
<b>Total</b>	135	100.0	456	100.0

Source: Immigrants in Waterloo Region: Fact Sheet #8, ROWPH, 2009

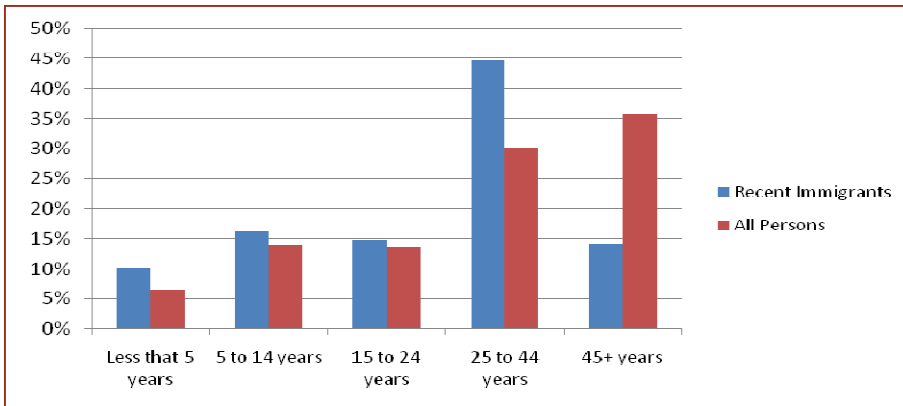
## Countries of Origin



While immigrants to Cambridge come from all over the world, historically the vast majority have come from European countries. Over the past couple of decades there has been considerable change in the source countries of immigrants. Today's immigrants hail mainly from Asia and the Middle East. In 2006 the share of recent immigrants from Pakistan, the largest source country, was 23.3%, followed by India at 18.6%.

Source: Statistics Canada, 2006 Census

## Age and Gender

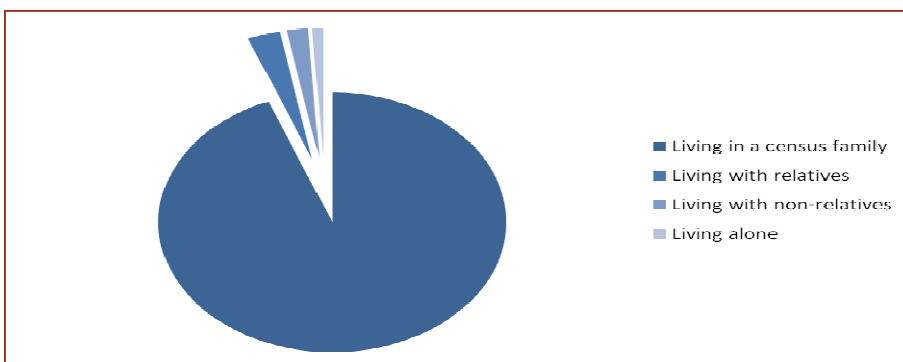


Recent immigrants tend to be younger than the Cambridge population as a whole. The largest age category is the 25-44 age category (44.6%) followed by the 5-14 age category (16.2%) and the 15-24 age category (14.8%).

At 53% there are slightly more women in the recent immigrant population than in the population of Cambridge as a whole. In 2006 there were 165 more women than men among the 2,935 recent immigrants living in Cambridge.

Source: Statistics Canada, 2006 Census

## Marital Status and Family Structure



There is considerable variation in marriage patterns between recent immigrants and the population of Cambridge as a whole. Relatively more recent immigrants are married (69.2% vs. 52.8%) and fewer are separated, divorced, widowed, or never married.

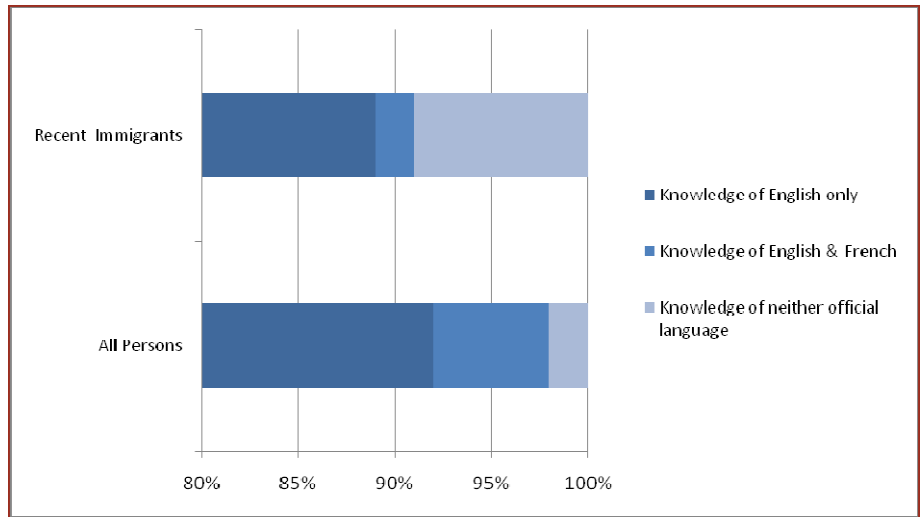
Recent immigrants are more likely to live in census families. Of those not in census families, the majority live with relatives. Seniors tend to live either as part of a census family or with relatives. In 2006 only 1% of recent immigrants were living alone.

Source: Statistics Canada, 2006 Census

## Language Ability

At the time of the 2006 Census the majority of recent immigrants living in Cambridge reported knowing at least one of Canada's official languages. However, nearly one in ten (275 out of 2935 people) reported knowing neither English nor French.

While English dominates as the language used in the workplace, 59% of recent immigrants reported speaking a non-official language at home. In 2006 the top non-official languages spoken at home were Urdu (14.0%), Pashto (12.8%), Punjabi (10.4%), Spanish (6.4%), and Macedonian (6.1%).

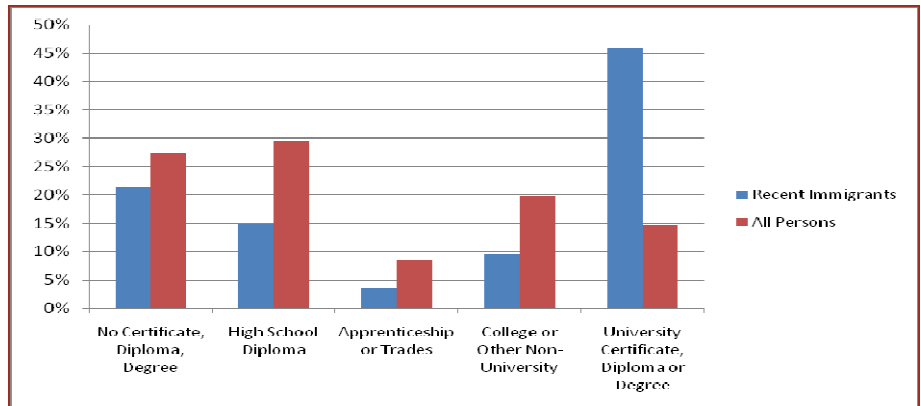


Source: Statistics Canada, 2006 Census

## Educational Attainment

More so than in the past, today's immigrants are arriving with strong academic and professional credentials. In 2006 46.0% of the recent immigrant population reported having undergraduate or graduate level university degrees. This compares with 14.6% of the Cambridge population as a whole.

The most commonly reported field of study for recent immigrant men was architecture and engineering, followed by business, management and public administration while for women it was business, management and public administration followed by social and behavioural sciences and law.



Source: Statistics Canada, 2006 Census

## Labour Force Activity

Despite the fact that many recent immigrants are well-educated, they have lower labour force participation rates and higher unemployment rates than the population as a whole. The disparities are smaller for men than for women.

Recent immigrants who are employed are more likely to work part year or part time than the population as a whole. Occupations vary by gender; a higher proportion of women work in service and administrative occupations while there are more men in transportation and processing occupations.

	All Men	Recent Immigrant Men	All Women	Recent Immigrant Women
<b>Participation rate</b>	78%	78%	66%	55%
<b>Employment rate</b>	74%	71%	62%	49%
<b>Unemployment rate</b>	5%	10%	7%	11%

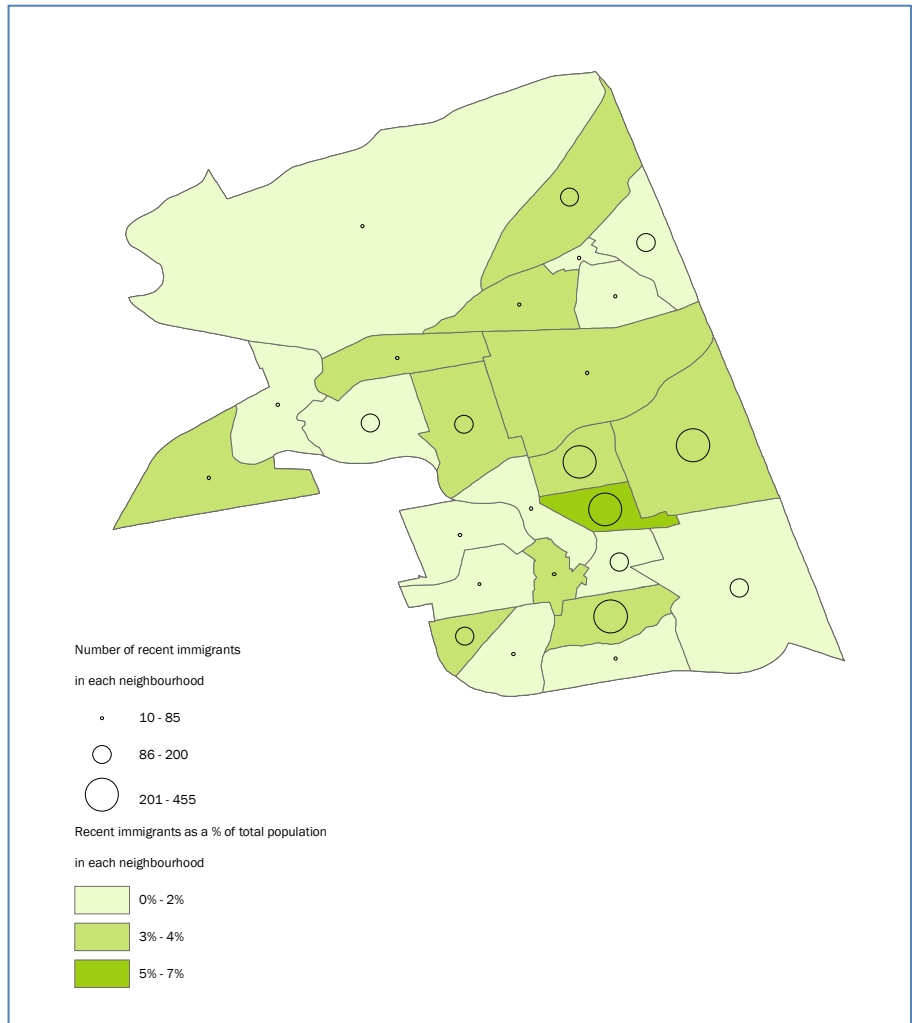
Source: Statistics Canada, 2006 Census

## Settlement Patterns of Recent Immigrants to Cambridge

Immigrants have settled widely across the city but there are a few areas of greater concentration. Many of the immigrants who arrived between 2001 and 2006 settled in the Shades Mills (16%), Elgin Park (11%), Northview (9%), Glenview (9%), Hillcrest/Cooper (7%), and Langs Farm (6%) neighbourhoods.

To some degree an association exists between the distribution of recent immigrants and neighbourhoods with lower incomes and higher densities of rental housing. Elgin Park (the darker area on the map to the right) is a neighbourhood with a relatively high proportion of recent immigrants. It also has more rental properties, a higher rate of unemployment, and more families living on low incomes than does the city as a whole.

Cambridge YMCA Immigrant Services works to enhance the wellness of immigrants by providing integration opportunities, resources and other support services to assist in fostering the creation of an inclusive community. One of the greatest areas of need that has consistently been identified in its annual client survey is the need for accessible, affordable and appropriate housing.

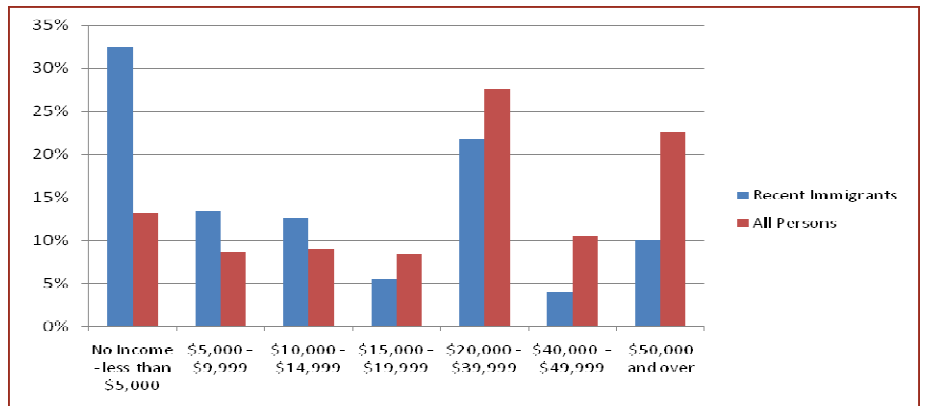


Source: Statistics Canada, 2006 Census

## Income Levels Relative to the Total Population

As shown in the chart to the right, recent immigrants are over-represented in lower income categories and under-represented in higher income categories. On average, the incomes reported by recent immigrants in 2005 were 40% lower than those of the Cambridge population as a whole.

In 2005, 27% of recent immigrants were living in low-income situations (LICO; after-tax). This was nearly four times as large a share as for the rest of the Cambridge population. Four in ten recent immigrant children under 6 years of age live in low-income families.



Source: Statistics Canada, 2006 Census